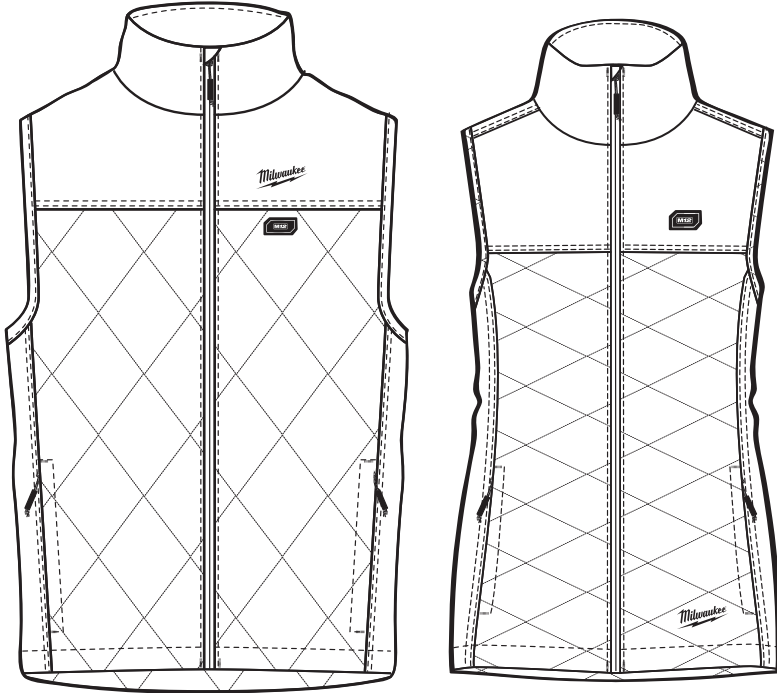




OPERATOR'S MANUAL



Cat. No.
M12 HVM BLACK9, M12 HVM BLACK9W
M12 PP

M12™ AXIS HEATED VEST AND M12™ BATTERY HOLDER

 **WARNING**

To reduce the risk of injury, user must read and understand operator's manual.



GENERAL PRODUCT SAFETY WARNINGS

AWARNING Read all safety warnings and instructions. Failure to follow all instructions listed below may result in electric shock, fire and/or serious injury. Save all warnings and instructions for future reference.

WORK AREA SAFETY

•Keep work area clean and well lit. Cluttered or dark areas invite accidents.

ELECTRICAL SAFETY

•Do not expose heated vest to rain or wet conditions. Water will increase the risk of electric shock.
•Do not abuse the power cable. Never use the cord for carrying, pulling or unplugging the heated vest. Keep cord away from heat, oil, sharp edges or moving parts.

PERSONAL SAFETY

•Stay alert, watch what you are doing and use common sense when using the heated vest. Do not use while you are tired or under the influence of drugs, alcohol or medication. A moment of inattention may result in serious personal injury.

POWER TOOL USE AND CARE

•Do not use the heated vest if the power button does not turn it on and off. Any heated vest that cannot be controlled with the power button is dangerous and must be repaired.
•Disconnect the battery pack from the heated vest before storing. Such preventive safety measures reduce the risk of starting the heated vest accidentally.
•Store out of the reach of children and do not allow persons unfamiliar with these instructions to operate the heated vest. Heated vest can be dangerous in the hands of untrained users.
•Maintain heated vest. Check for breakage of parts and any other condition that may affect the heated vest's operation. If damaged, have the heated vest repaired before use.
•Use the heated vest in accordance with these instructions, taking into account the working conditions and the work to be performed. Use of the heated vest for operations different from those intended could result in a hazardous situation.

BATTERY TOOL USE AND CARE

•Recharge only with the charger specified by the manufacturer. A charger that is suitable for one type of battery pack may create a risk of fire when used with another battery pack.
•Use heated vest only with specifically designated battery packs. Use of any other battery packs may create a risk of injury and fire.
•When battery pack is not in use, keep it away from other metal objects like paper clips, coins, keys, nails, screws, or other small metal objects that can make a connection from one terminal to another. Shorting the battery terminals together may cause burns or a fire.
•Under abusive conditions, liquid may be ejected from the battery; avoid contact. If contact accidentally occurs, flush with water. If liquid contacts eyes, additionally seek medical help. Liquid ejected from the battery may cause irritation or burns.

SERVICE

•Have your heated vest serviced by a qualified repair person using only identical replacement parts. This will ensure that the safety of the heated vest is maintained.

SPECIFIC SAFETY RULES FOR HEATED VEST

Read instructions carefully.

Use:

•Do not use this heated vest with an infant, child, a helpless person, or anyone insensitive to heat, such as a person with poor blood circulation.
•If you have a medical condition making you sensitive to overheating, or you use any personal medical devices, consult the device manufacturer and/or your physician to determine if use of this product is appropriate.
•Never use if inner liner is wet.
•Heating elements are not recommended to touch bare skin.
•Shut off power immediately if discomfort occurs.
•Do not allow the cords to be pinched.
•If improper operation of this heated vest is observed, discontinue its use immediately and contact a MILWAUKEE® service facility for repair.
•Do not use pins. They may damage the electric wiring.

Care:

•Before washing, disconnect and remove battery pack and battery holder from battery holder pocket. Push the power cord completely into the battery holder pocket and zip pocket closed.
•Follow Care Instructions on vest tags. Machine wash, Gentle Cycle in warm water. Tumble Dry Low Heat.
•Do not bleach.
•Do not iron.
•Do not wring or twist.
•Do not dry clean. Do not use dry-cleaning fluid on this heated vest. Do not bleach. Cleaning solvents may have a deteriorating effect on the insulation of the heating element.
•Maintain labels and nameplates. These carry important information. If unreadable or missing, contact a MILWAUKEE® service facility for a replacement.

SYMBOLGY



Volts



Direct Current



Machine wash, gentle cycle in warm water



Do not bleach



Do not wring or twist



Tumble dry, low heat



Do not iron



Do not dry-clean



Regulatory Compliance Mark (RCM).

This product meets applicable regulatory requirements.

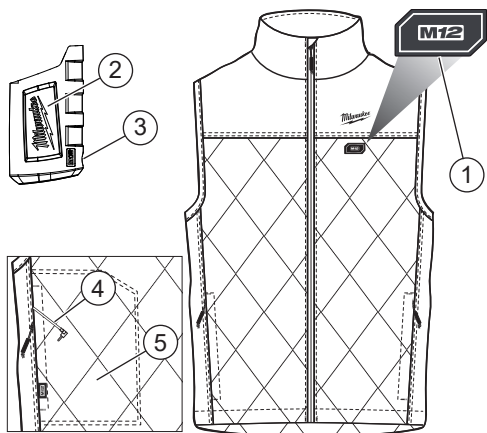
ADDITIONAL BATTERY SAFETY RULES

⚠WARNING To reduce the risk of fire, personal injury, and product damage due to a short circuit, never immerse your tool, battery pack or charger in fluid or allow a fluid to flow inside them. Corrosive or conductive fluids, such as seawater, certain industrial chemicals, and bleach or bleach-containing products, etc., can cause a short circuit.

SPECIFICATIONS

Cat. No.
M12 HVM BLACK9, M12 HVM BLACK9W
M12 PP
Volts..... 12V DC
Battery Type..... M12™
Charger Type..... M12™

FUNCTIONAL DESCRIPTION



1. Power button
High: Red LED
Medium: White LED
Low: Blue LED
2. Battery holder
3. Power cable port
4. Power cable
5. Battery holder pocket

ASSEMBLY

⚠WARNING Recharge only with the charger specified for the battery. For specific charging instructions, read the operator's manual supplied with your charger and battery.

Inserting/Removing the Battery

To **insert** the battery, slide the pack into the body of the battery holder. Make sure it latches securely into place.

Insert the power cable (from inside the battery holder pocket) into the power cable port on the battery holder. Place the battery holder into the pocket and close pocket with zip.

To **remove** the battery, push in the release buttons and pull the battery pack out of the holder.

OPERATION

The power button is located on the upper left side of the vest.

To **turn on**, press and hold the heated vest power button (1 to 2 seconds). The vest will turn on to High and the red LED will be illuminated.

Temperature setting can be **adjusted** at any time by pressing the heated vest power button. Each press will cycle through the heated vest's temperature settings.

To **turn off** the heated vest, press and hold the heated vest power button until the LED turns off (1 to 2 seconds).

If the heated vest turns off unexpectedly, check connections and charge the battery pack.

CARE

⚠WARNING To reduce the risk of injury, always unplug the charger and remove the battery pack and battery holder from the heated vest before performing any maintenance. Never disassemble the heated vest, battery pack or charger. Contact a MILWAUKEE® service facility for ALL repairs.

If the heated vest does not start or operate properly with a fully charged battery pack, clean the contacts on the battery pack. If the heated vest still does not work properly, return the heated vest, charger and battery pack, to a MILWAUKEE® service facility for repairs.

⚠WARNING To reduce the risk of personal injury and damage, disconnect and remove battery pack and battery holder from battery holder pocket before washing. Never immerse your battery holder, battery pack, or charger in liquid or allow a liquid to flow inside them.

To clean the heated vest:

1. Remove battery pack and battery holder.
2. Push the power cord completely into the battery holder pocket and zip pocket closed.
3. Machine wash, Gentle Cycle in warm water. Do not use bleach. Do not dry clean. Do not wring or twist.
4. Tumble Dry on Low Heat. Do not iron.

ACCESSORIES

⚠WARNING Use only recommended accessories. Others may be hazardous.

For a complete listing of accessories, go online to www.milwaukeetools.com.au/ www.milwaukeetools.co.nz or contact a distributor.

WARRANTY - AUSTRALIA and NEW ZEALAND

Please refer to Australian and New Zealand warranty supplied with tool. This warranty applies only to product sold in Australia and New Zealand.

SERVICE - AUSTRALIA and NEW ZEALAND

MILWAUKEE® prides itself in producing a premium quality product that is Nothing But Heavy Duty®. Your satisfaction with our products is very important to us! If you encounter any problems with the operation of this tool, please contact your authorised **MILWAUKEE®** dealer.

For a list of **MILWAUKEE®** dealers, guarantee or service agents please contact **MILWAUKEE®** Customer Service or visit our website.

(Australia Toll Free Telephone Number 1300 645 928)

(New Zealand Toll Free Telephone Number 0800 279 624)

or visit www.milwaukeetools.com.au / www.milwaukeetools.co.nz.

Milwaukee Electric Tool Corporation

13135 West Lisbon Road, Brookfield, Wisconsin U.S.A. 53005

Milwaukee Tool (Australia)

21 Kelleetts Road, Rowville, VIC 3178
Melbourne, Australia

Milwaukee Tool (New Zealand)

2 Landing Drive, Mangere
Auckland, 2022, New Zealand

Designed by Milwaukee Electric Tool Corp.

Professionally Made in China for Milwaukee Tool (Australia) / Milwaukee Tool (New Zealand)

Printed in China