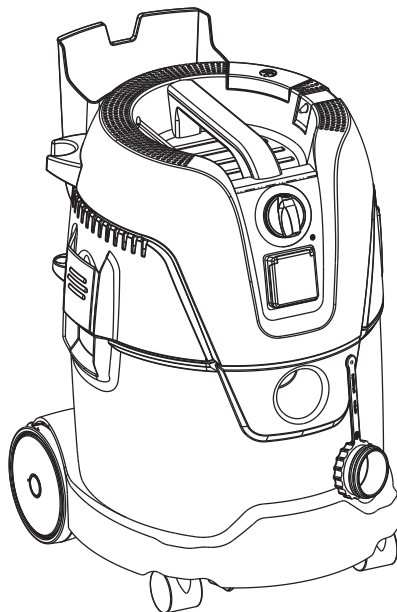


Milwaukee

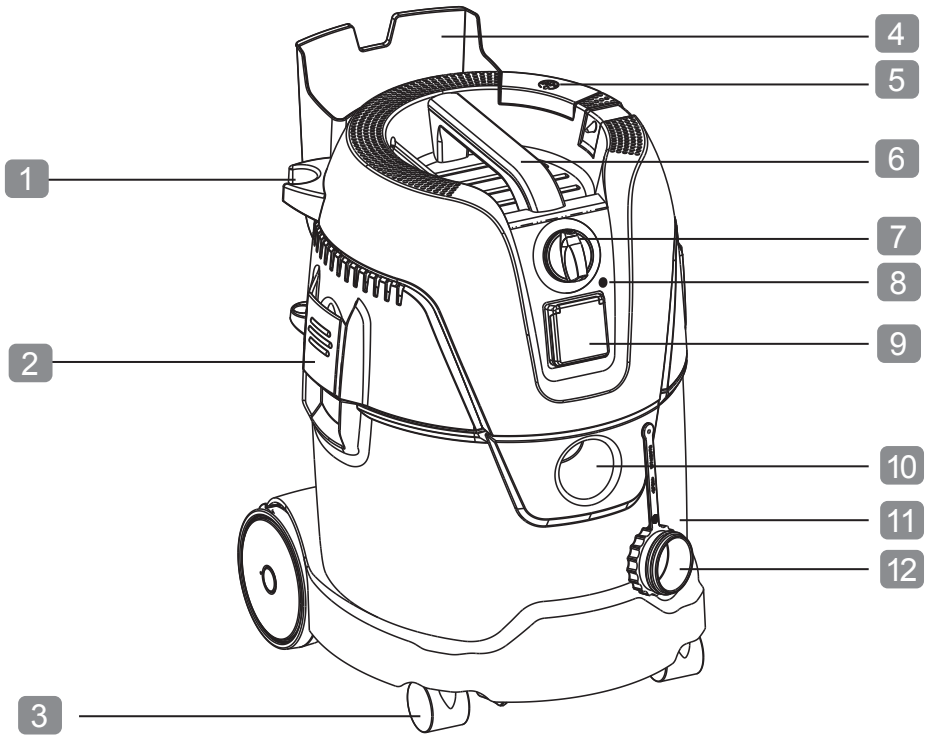
Nothing but **HEAVY DUTY.**TM



AS2-250EH



Original instructions



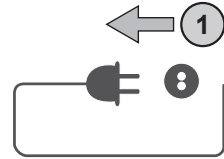
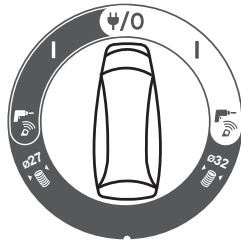
1. Wand storage
2. Top enclosure clip (each side)
3. Front castors
4. Accessories holder
5. Filter cleaning button
6. Top carry handle
7. On/Off rotary switch
8. Overload device
9. Power tool outlet
10. Suction intake
11. Container
12. Suction intake cover



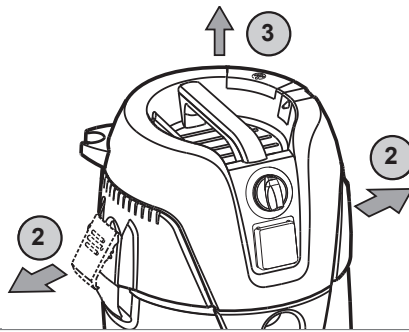
Filter bag installation



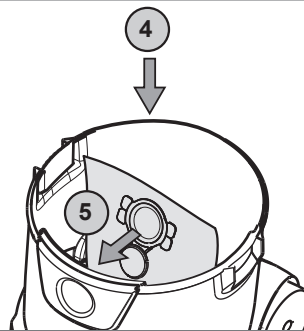
1



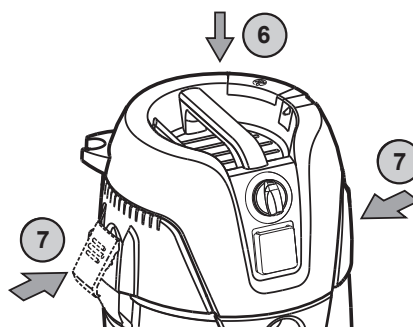
2



3



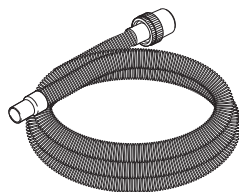
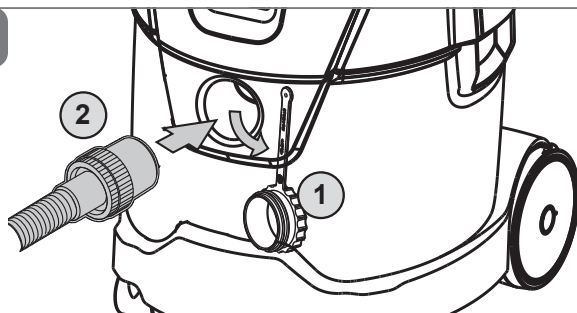
4





Hose insert & operations

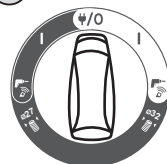
1



Ø 27 mm

Ø 32 mm

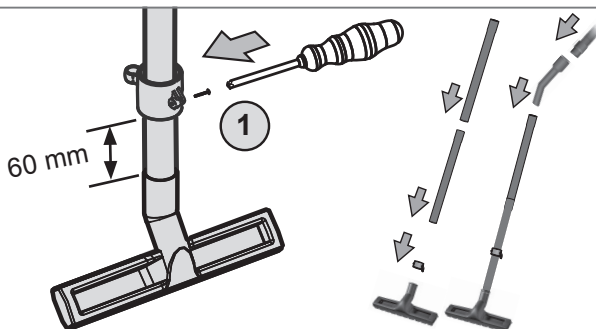
3



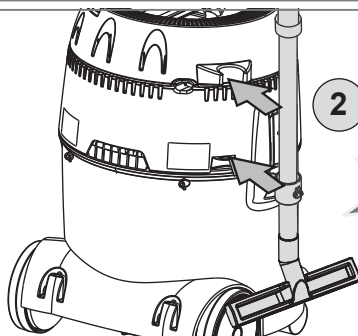
Ø 27 mm

Ø 32 mm

2

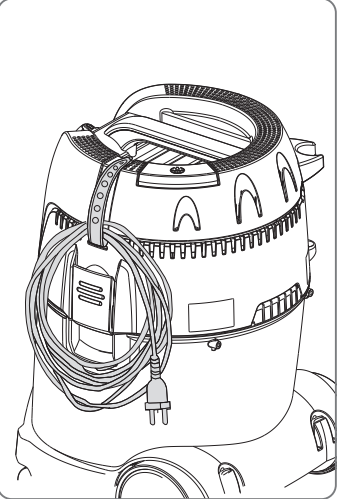
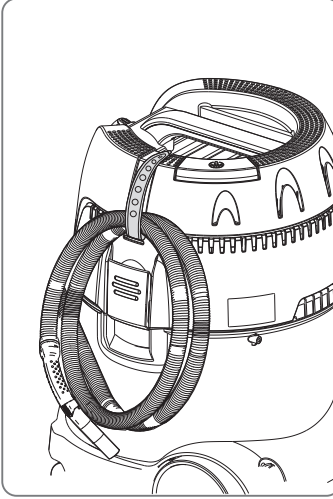
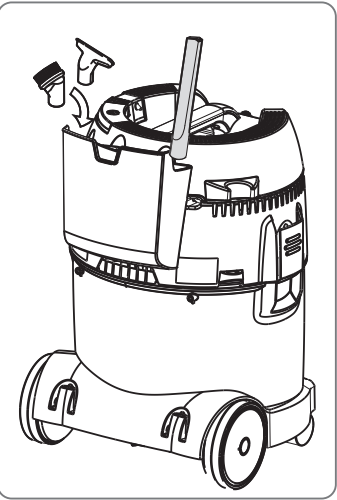
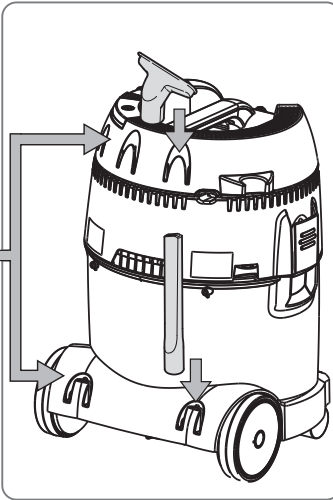


3





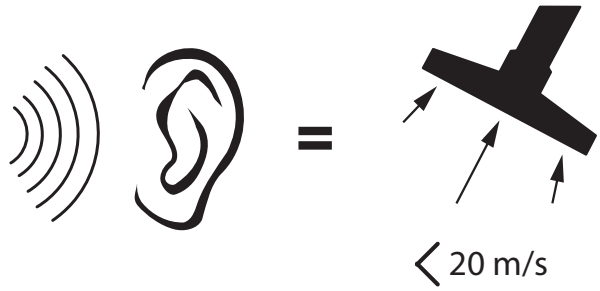
Accessories placement



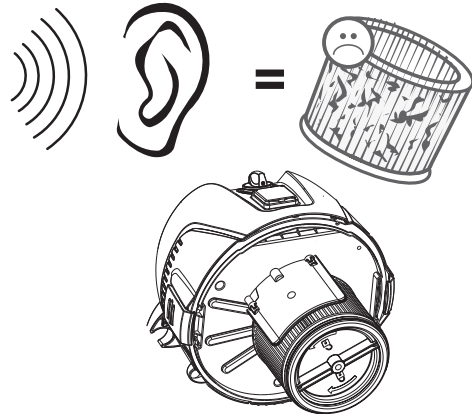


Flow rate and filter warning

1



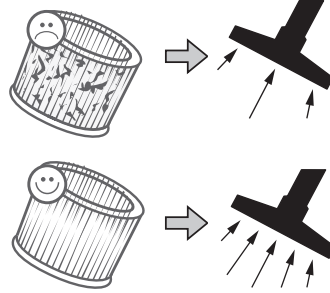
2



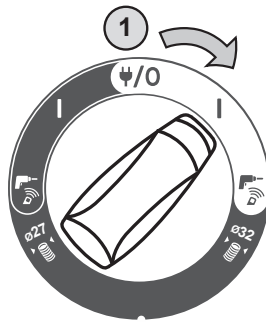


Auto-Clear filter cleaning system

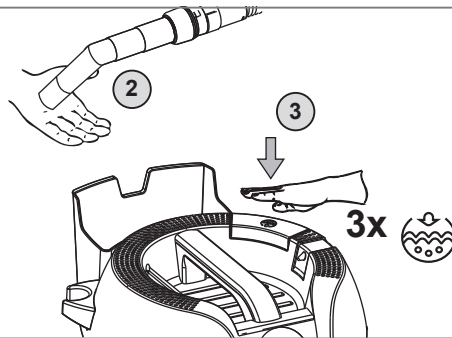
1



2

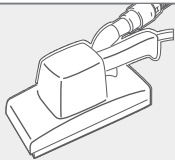


3



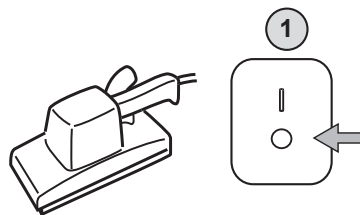
4

Push&Clean

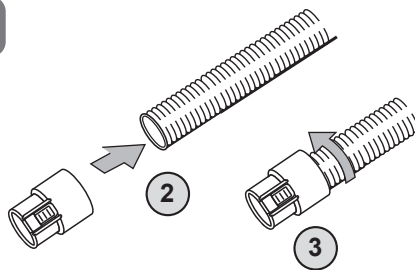


Power tool adaption

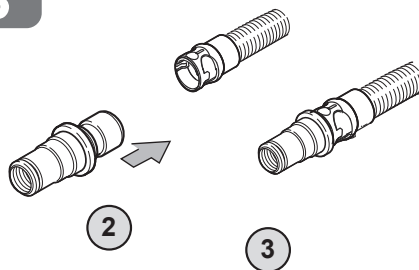
1



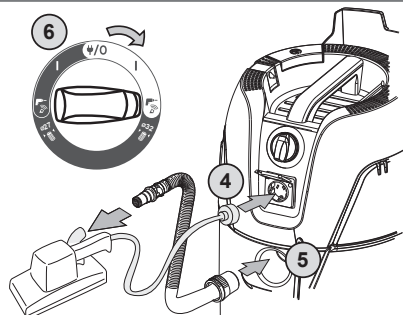
2 A

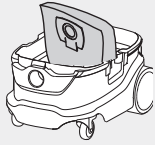


2 B



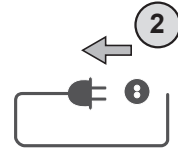
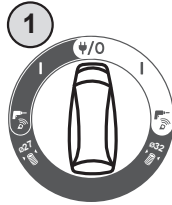
3



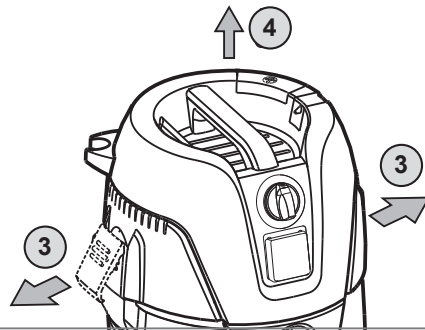


Filter bag replacement

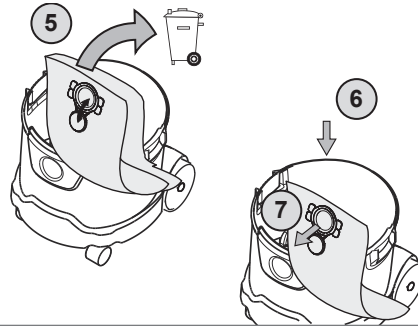
1



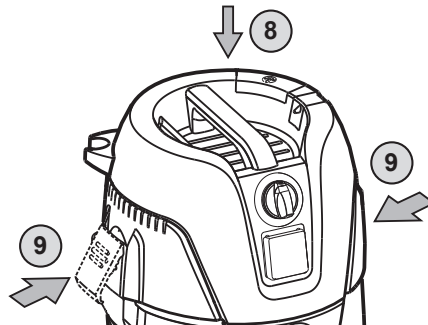
2

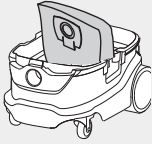


3



4

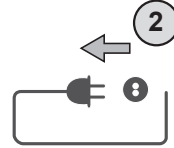
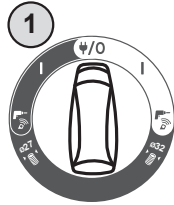




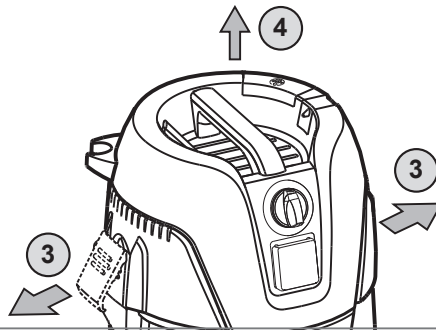
Motor cooling air diffuser cleaning



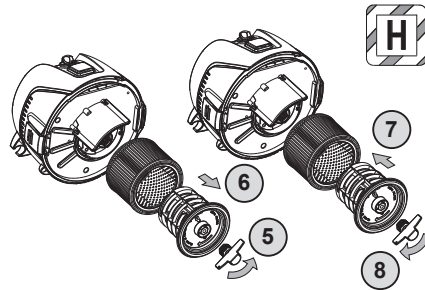
1



2



3



TECHNICAL DATA**AS2-250EH**

Type	Dust Extraction
Voltage	220-240 V ~
Current max.	10 A
Power max.	1,200 W
Connected load for appliance outlet	1,100 W
Safety class	I
Protection class	IPX4
Air delivery rate	3,700 l/min / 222 m ³ /h
Vacuum	245 hPa / 245 mbar
Dust Class	H
Suction hose diameter	32 mm / 27 mm
Suction hose length	4 m
Dimensions	375 x 390 x 530 mm
Weight	9.0 kg

Noise information:

Measured values determined according to ISO 4871.

Typically, the A-weighted noise levels of the tool are:

Sound pressure level/ Uncertainty K

69.0 dB (A) / 2 dB (A)

Sound power level / Uncertainty K

61.0 dB (A) / 2 dB (A)

Wear ear protectors!**Vibration information according to EN 60335-2-69**

Total vibration values (vector sum in the three axes) determined according to ISO 5349.

Vibration emission value a_w / Uncertainty K

≤ 2.5 m/s²

SAFETY INSTRUCTIONS**WARNING**

Read all safety warnings, instructions, illustrations and specifications provided with this power tool. Failure to follow all instructions listed below may result in electric shock, fire and/or serious injury.

Save all warnings and instructions for future reference.

FURTHER SUPPORT

Further information on the appliance can be found on our website at www.milwaukeetool.com.au / www.milwaukeetool.co.nz
For further queries, please contact the **MILWAUKEE®** service representative responsible for your country.

- See reverse of this document.

INSTRUCTIONS FOR USE

This appliance is not intended for use by persons (including children) with reduced physical, sensory or mental capabilities, or lack of experience and knowledge. Children should be supervised to ensure that they do not play with the appliance.

Children shall not play with the appliance.

Do not use any unsafe work techniques.

Never use the dust extractor without a filter, or if the filter is damaged.

Switch off the appliance and disconnect the mains plug in the following situations:

- Prior to cleaning and servicing
- Prior to replacing components
- Prior to changing over the appliance
- If foam develops or liquid emerges, stop work immediately and empty the dirt tank.

All local and Federal Regulations regarding the collection and disposal of dust must be adhered to.

Before starting work, the operating staff must be informed on and trained within:

- use of the machine
- risks associated with the material to be picked up
- safe disposal of the collected material

SPECIFIED CONDITIONS OF USE

This mobile dust extractor is designed, developed and rigorously tested to function efficiently and safely when properly maintained and used in accordance with the following instructions.

This machine is intended for commercial use, for example in hotels, schools, hospitals, factories, shops, offices and rental businesses.

This machine is also suitable for industrial use, such as e.g. plants, construction sites and workshops.

Accidents due to misuse can only be prevented by those using the machine.

READ AND FOLLOW ALL SAFETY INSTRUCTIONS.

Any other use is considered as improper use. The manufacturer accepts no liability for any damage resulting from such use. The risk for such use is borne solely by the user. Proper use also includes proper operation, servicing and repairs as specified by the manufacturer.

The air flow in Safety Vacuum systems has to be strictly controlled to achieve a minimum flow rate of $V_{min} = 20$ m/s in the suction hose.

For Dust Class H machines (with type designation AS2-250EH) following applies:

The appliance is suitable for picking up dry, nonflammable dust, non flammable liquids, hazardous dusts with OEL values, carcinogenic dusts, dusts containing germs.



Dust Class H (IEC 60335-2-69). The dusts which belong to this class are dusts with OEL values, all carcinogenic dusts and dusts which are mixed with pathogenic agents. Vacuums for Dust Class H are tested in their entirety and have a maximum degree of permeability of 0.005%. The disposal must be dust free.

The safety label on the machine warns:

This appliance contains dust hazardous to health. Emptying and maintenance operations, including removal of the dust collection means, must only be carried out by authorised personnel wearing suitable personal protection. Operate only after the full filtration system has been fitted and checked.

For dust extractors, ensure adequate air change rate, when the exhaust air is returned to the room. Observe national regulations before use.

OEL = Occupational Exposure Limit

IMPORTANT WARNINGS

WARNING

- To reduce the risk of fire, electric shock, or injury, please read and follow all safety instructions and caution markings before use. This machine is designed to be safe when used for cleaning functions as specified. Should damage occur to electrical or mechanical parts, the machine and / or accessory should be repaired by a competent service centre or the manufacturer before use in order to avoid further damage to the machine or physical injury to the user.
- Do not leave the device when it is connected. Disconnect the power plug when not in use and before carrying out maintenance work.
- Do not use the device if the supply cable or power plug is damaged. To remove the plug from the socket, pull on the plug, do not pull on the cable. Do not touch the plug or the device with wet hands. Switch off the vacuum cleaner before unplugging it.
- Do not pull the device behind you by the cable or carry it by the cable. Do not use the cable as a handle. Be careful not to pinch the cable or pull it around sharp corners or edges. Do not drive the device over the cable. Make sure that the cable does not come into contact with hot surfaces.
- Do not place hair, loose clothing or body parts near openings or moving parts of the device. Do not use the device if any of the openings are blocked and do not insert any objects into the openings. Keep openings free of dust, lint, hair, or other material that could restrict airflow.
- Do not use in outside areas at low temperature.
- Do not use in outside areas!
- If the machine is not working properly or has been dropped, damaged, left outdoors, or dropped into water, return it to a service centre or dealer.
- If foam or liquid escapes from the machine, switch off immediately.
- The machine may not be used as a water pump. The machine is intended for vacuuming air and water mixtures.
- Connect the machine to a properly earthed mains supply. The socket outlet and the extension cable must have an operative protective conductor.

- Provide for good ventilation at the working place.
- Do not use the machine as a ladder or step ladder. The machine can tip over and become damaged.
- Only use the socket outlet on the machine for purposes specified in the instructions.

RESIDUAL RISK

Even when the product is used as prescribed, it is still impossible to completely eliminate certain residual risk factors. The following hazards may arise in use and the operator should pay special attention to avoid the following:

ELECTRICAL COMPONENTS

DANGER

- The upper section of the machine contains live components. Contact with live components leads to serious or even fatal injuries. Never spray water on to the upper section of the machine.

DANGER

- Electric shock due to faulty supply cord. Touching a faulty supply cord can result in serious or even fatal injuries.
- Do not damage the supply cord (e.g. by driving over it, pulling or crushing it). Keep supply cord clear from working area of the machine. Always trail the supply cord behind you.
- The supply cord must be inspected for signs of damage at regular intervals and may only be used if in perfect condition.
- In no circumstances should the power supply cord be wrapped around fingers or any part of the operators person.

HAZARDOUS DUST

WARNING

- Hazardous materials. Vacuuming up hazardous materials can lead to serious or even fatal injuries. The following materials should not be picked up by the vacuum cleaner:
 - hot materials (burning cigarettes, hot ash, etc.)
 - flammable, explosive, aggressive liquids (e.g. petrol, solvents, acids, alkalis, etc.)
 - flammable, explosive dust (e.g. magnesium or aluminium dust, etc.)
- **CAUTION!** Picking up environmentally hazardous materials. Materials picked up can present a hazard to the environment. Dispose of the dirt in accordance with local regulations. Before removing the machine from the area contaminated with harmful substances.
 - Clean the outside of the machine, wipe it clean or pack the machine in well-sealed packaging and avoid spreading deposited harmful dust.
- During maintenance and repair work all contaminated parts that could not be cleaned satisfactorily must be:
 - Packed in well-sealed bags
 - Disposed of in a manner that complies with local regulations for such waste removal.

ACCESSORIES AND SPARE PARTS

CAUTION! The use of non-genuine spare parts, brushes and accessories can impair the safety and or function of the appliance. Use only **MILWAUKEE®** and explicit described accessories and **MILWAUKEE®** spare parts. Spare parts that can affect health and safety of the operator and or function of the appliance, are specified below:

Description	Part number
Filter element Ø185 x 140 PTFE Dust Class H	 4932 4982 35
Filter bag set AS2-250	4932 3523 06

IN EXPLOSIVE OR INFLAMMABLE ATMOSPHERE

WARNING

Do not use the device in rooms with a potentially explosive atmosphere.

Do not use the device in rooms in which easily flammable material or gases may be present.

CONTROL / OPERATION

CAUTION! Damage due to unsuitable mains voltage. The appliance can be damaged as a result of being connected to an unsuitable mains voltage.

- Connect only to single-phase AC system voltage as indicated on the rating plate. It is also possible to connect to sockets without an earthing contact as the design conforms to safety class II.

STARTING AND OPERATING OF THE MACHINE

Check that the electrical switch is switched off (in position 0). Check that a suitable filter is installed in the machine. Then connect the suction hose into the suction inlet on the machine by pushing the hose forward until it fits firmly in place at the inlet. Then connect the tubes to the hose handle, twist the tubes in order to ensure that they are properly fitted. Attach suitable nozzle to the tube. Choose nozzle depending on what type of material that is to be picked-up.

If used for dust extraction in connection with a dust producing tool, connect the end of suction hose with appropriate adapter. Rotate the ON/OFF switch to position I in order to start the motor.

CAUTION!



Hose \varnothing 32 mm, turn clockwise

activate the machine: turn I
for AUTO on/off: turn I
Stop the machine turn 0.



Hose \varnothing 27 mm, turn counter-clockwise

activate the machine: turn I
for AUTO on/off : turn I
Stop the machine turn 0

The hose diameter and the setting for suction hose diameter must be the same.



\varnothing 27 mm

\varnothing 32 mm



\varnothing 27 mm

\varnothing 32 mm

AUTO-ON/OFF SOCKET OUTLET FOR POWER TOOLS

WARNING! Only use the socket outlet on the machine for the purposes specified in these instructions.

The appliance socket is designed for electrical auxiliary equipment. See technical data for reference.

- Prior to plugging in an appliance, always switch off the machine and the appliance that is to be connected.
- Read the operating instructions to the appliance to be connected and observe the safety notes contained in these.

An appliance socket with earthing contact is integrated in the machine. An external power tool can be connected there. The socket features permanent power on, when the electrical switch is in position $\psi/0$.

In position ψ : The machine can be switched on and off by the power tool connected. Dirt is picked up from the source of dust immediately. To comply with regulations, only approved dust producing tools should be connected.

Machines equipped with MILWAUKEE® Bluetooth remote can also be switched on and off by using the remote. Please see user guide supplied together with the remote.

The maximum power consumption of the connected electrical appliance is stated in section "Technical Data".

Before turning the switch to position ψ ensure that the tool connected to the appliance socket is switched off.

PUSH&CLEAN

The filter cleaning system needs to be manually operated at a minimum when the machine's suction has noticeably dropped or is not sufficient for the job.

FLOW RATE WARNING

CAUTION! Never use the dust extractor without a filter, or if the filter is damaged. Check that the filter is present and properly fitted. The machine is equipped with a system to monitor air velocity. Before picking up dust with occupational exposure limit values, check the volume flow monitor.

When the motor is running, hold the suction hose shut to reduce the volume flow. The acoustic warning sound will operate to indicate that there is a problem. Checking this regularly ensures the operator knows it is still working. If the acoustic sound does not operate return the machine to a MILWAUKEE® authorised service centre for repair.

Set the diameter setting to the actual hose size. When the acoustic sound starts, air velocity is below 20 m/s.

- Check if container or filter bag is full.
- Check if air flow is reduced in suction hose, tube/nozzle.
- Check filter.

ANTISTATIC CONNECTION

CAUTION! The machine is equipped with an antistatic system to discharge any static electricity that may develop during dust pick-up.

The antistatic system creates an earth ground connection to the inlet fitting of the container. For proper function the use of an electrical conductive or antistatic suction hose is recommended.

WET PICK-UP

CAUTION! The machine is equipped with a float system that shuts off the airflow through the machine when the maximum liquid level is reached. You will hear a noticeable change of the sound from the motor and notice that the suction power decreases. When this occurs, switch the machine off. Disconnect the machine from the socket. Never pick up liquid without the float body in place.

- If foam appears, stop work immediately and empty the tank.
- Clean the water level limiting device regularly and examine it for signs of damage.

Before emptying the container, unplug the machine. Disconnect the hose from the inlet by pulling out the hose. Release the latch by pulling them outwards so that the motor top is released. Lift up the motor top from container. Always empty and clean the container. Empty by tilting the container backwards or sideways and pour the liquids into a floor drain or similar. Put back the motor top to the container. Secure the motor top with the latches.

It is recommended to use M-Class PET filter or filter sieve for wet pick up.

DRY PICK-UP

CAUTION! Picking up environmentally hazardous materials.

Materials picked up can present a hazard to the environment.

Dispose of the dirt in accordance with local regulations.

CAUTION! Dust Class H machines are equipped with an upstream Dust Class H filter fitted on bottom side of motor top.

EMPTYING AFTER DRY PICK-UP

Remove the supply plug from the socket before emptying after dry pick-up. Check the filters and dustbag regularly. Release the latch by pulling them outwards so that the motor top is released. Open up the motor top from container.

PTFE H-Class: Use Push&Clean, gentle brushing and infrequent washing with clean water. Take caution not to damage filter membrane.

Dustbag: Check the dust bag and determine about of fill. Replace dust bag if necessary. Remove the old bag. The new bag is fitted by passing the plastic collar with the rubber membrane through the vacuum inlet. Make sure that the rubber membrane is passing past the heightening at the vacuum inlet.

After emptying: Close motor top to the container and secure the motor top with the latches. Never pick up dry material without cartridge filter and dustbag fitted in the machine. The suction efficiency of the vacuum cleaner depends on the size and quality of the filter and dust bag. Therefore use only Original filter and dust bags.

AFTER USING THE MACHINE

AFTER USE

After picking up hazardous dust, close the inlet cap and clean the outside of the machine by wiping clean or treated with sealant before being taken out of the hazardous area. All the machine parts shall be regarded as contaminated when removed from the hazardous area and appropriate action taken to prevent dust dispersal.

Remove the plug from the socket when machine is not in use. Wind up the cord starting from the machine.

TRANSPORTATION

- Before transporting the machine, close all the latches.
- Close the inlet with the inlet cap.
- Do not tilt the machine if there are liquids in the dirt tank.
- Do not use a crane hook to lift the machine.

STORAGE

CAUTION! Store the machine in a locked, clean, dry place which is protected from frost and inaccessible to children. **Protect the machine from dampness.** Wet filters and the interior part of the liquid container must be dried before storage.

OVERLOAD PROTECTION FOR SOCKET OUTLET

An external power tool can be connected to the socket outlet. The socket has an overload device to protect the machine against power overload. If the power draw on the outlet exceeds 1,100 W the overload device activates and cuts off power to the socket outlet. The overload device needs around 1 minute to cool down before it can be reset, press the button to reset.

MAINTENANCE

Use only **MILWAUKEE®** accessories and **MILWAUKEE®** spare parts.

For user servicing, the machine shall be dismantled, cleaned and serviced, as far as is reasonable practicable, without causing risk to the maintenance staff and others. Suitable precautions include decontamination before dismantling, provision for local filtered exhaust ventilation where the machine is dismantled, cleaning of the maintenance area and suitable personal protection.

REGULAR SERVICING AND INSPECTION

Regular servicing and inspection of your machine must be carried out by suitably qualified personnel in accordance with relevant legislation and regulations. In particular, electrical tests for earth continuity, insulation resistance, and condition of the flexible cord should be checked frequently.

In the event of any defect, the machine **MUST** be withdrawn from service, completely checked and repaired by an authorised service technician.

The test method that can be used to verify the machine's filter efficiency is specified in 22.AA.201.2 of AS/NZS 60335.2.69. If the test fails, it shall be repeated with a new essential filter.

When carrying out service or repair operations, all contaminated items which cannot be satisfactorily cleaned are to be disposed of; such items shall be disposed of in impervious bags in accordance with any current local regulations for disposal of such waste.

MAINTENANCE

Remove the plug from the socket before performing maintenance. Connect only to single-phase AC system voltage as indicated on the rating plate. It is also possible to connect to sockets without an earthing contact as the design conforms to safety class II. The machine is designed for continuous heavy work. Depending on the number of running hours – the dust filter should be renewed. Keep the machine clean with a dry cloth, and a small amount of spray polish.

PRECAUTIONARY MEASURES

During maintenance and cleaning, handle the machine in such a manner that there is no danger for maintenance staff or other persons.

Use filtered exhaust ventilation.

Clean the maintenance area so that no harmful substances get into the surroundings.

Wear suitable personal protective equipment.

Non-dust proof compartments should be removed for cleaning. Decontaminate the outside of the machine by vacuum cleaning, wiping it clean or packing the machine in well-sealed packaging before being removed from a hazardous area. All machine parts should be classified as contaminated when taken out of a hazardous area and appropriate action be taken to prevent dust dispersal.

CONTAMINATED ITEMS DISPOSAL

During maintenance or repair operations, any items contaminated and not sufficiently cleaned must be discarded. Such items must be disposed of in impervious bags in accordance with the applicable regulations for the disposal of such waste.

REGULAR TESTING

The machines must be inspected by **MILWAUKEE®** Service or a trained person at least once a year. Inspection scope includes filters, air tightness and control mechanisms. When returning to a **MILWAUKEE®** Service location, the entire machine will need to be returned (e.g. including the container).

In addition, the filtration efficiency of the machine must be assessed at least annually, or more frequently if necessary. The testing procedure, as outlined in EN 60335-2-69 AA.22.201.2, is employed to verify filter efficiency. If the initial test fails, it must be repeated with a new main filter.

SYMBOLS



Please read the instructions carefully before starting the machine.



CAUTION! WARNING! DANGER!



Always disconnect the plug from the socket before carrying out any work on the machine.



Dust Class H (IEC 60335-2-69). The dusts which belong to this class are: dusts with OEL values, all carcinogenic dusts and dusts which are mixed with pathogenic agents



AC Current



Do not dispose of waste electrical and electronic equipment as unsorted municipal waste. Waste electrical and electronic equipment must be collected separately. Waste light sources have to be removed from equipment. Check with your local authority or retailer for recycling advice and collection point.



Regulatory Compliance Mark (RCM). This product meets applicable regulatory requirements.



WARRANTY - AUSTRALIA and NEW ZEALAND

Please refer to Australian and New Zealand warranty supplied with tool. This warranty applies only to product sold by authorised dealers in Australia and New Zealand.

SERVICE - AUSTRALIA and NEW ZEALAND

MILWAUKEE[®] prides itself in producing a premium quality product that is Nothing But Heavy Duty™. Your satisfaction with our products is very important to us! If you encounter any problems with the operation of this tool, please contact your authorised *MILWAUKEE*[®] dealer.

For a list of *MILWAUKEE*[®] dealers, guarantee or service agents please contact *MILWAUKEE*[®] Customer Service or visit our website.

(Australia Toll Free Telephone Number 1300 645 928)

(New Zealand Toll Free Telephone Number 0800 645 928)

or visit milwaukeetool.com.au/milwaukeetool.co.nz.

Milwaukee Electric Tool Corporation

13135 West Lisbon Road, Brookfield, Wisconsin U.S.A. 53005

Milwaukee Tool (Australia)

26 - 40 Nina Link, Dandenong South,
Victoria, 3175, Australia

Milwaukee Tool (New Zealand)

274 Church Street, Penrose,
Auckland, 1061, New Zealand

DESIGNED BY MILWAUKEE ELECTRIC TOOL CORP.
PROFESSIONALLY MADE IN HUNGARY
PRINTED IN HUNGARY